

BitDefender Business Solutions

What's New Q2/2010 Release

Client Security 3.1.9

Windows Server Solutions 3.4

Global Marketing, Business Solutions
April 15, 2010

Table of Contents

| | | |
|-----|--|----|
| 1. | What Is New in Q2/2010 Release | 3 |
| 1.1 | BitDefender Security for Exchange 2010 | 4 |
| 1.2 | BitDefender Security for SharePoint 2007 | 5 |
| 1.3 | BitDefender Client Security 3.1.9 | 6 |
| 1.4 | BitDefender Management Server 3.1.9..... | 8 |
| 1.5 | BitDefender Security for Windows Servers 3.4 | 9 |
| 2. | Conclusion | 10 |

1. What Is New in Q2/2010 Release

With the launch of Q2/2010 release the BitDefender's Business Solutions now protect two new Microsoft® Server Solutions: Microsoft Exchange Server 2010 and Microsoft Office SharePoint Server 2007. The BitDefender's Centralized Management features are significantly improved for greater visibility, control and reporting across all organization's endpoint protection and server security solutions from a single Management Console.

This document provides information about the new features in the following solutions:

- BitDefender Client Security – Version 3.1.9 (improved)
- BitDefender Security for Exchange – Version 3.4 (new Exchange 2010)
- BitDefender Security for SharePoint – Version 3.4 (new SharePoint 2007)
- BitDefender Security for File Servers – Version 3.4 (improved)
- BitDefender Security for Mail Servers – Version 3.4 (improved)

1.1 BitDefender Security for Exchange 2010

The following new features or enhancements have been introduced in the BitDefender Security for Exchange version 3.4.

- Support for Microsoft Exchange Server 2010
- Improved Centralized Management features
- VBSpam Verified certification by using Virus Bulletin (VB) Certified SPAM Engine

Support for Microsoft Exchange Server 2010

Microsoft's latest Exchange Server 2010 is now supported by the BitDefender Security for Exchange solution. The BitDefender's solution implements tight integration by using Virus Scanning API (VSAPI) allowing multiple scanning methods – like in the earlier BitDefender's solution for Exchange Server 2007.



Improved Centralized Management features



BitDefender's Management Server now supports simultaneous platform versions of the server security solutions within the interface, for example BitDefender Security for Exchange 2010, 2007, 2003 and 2000 versions.

New reporting features make it easier to run reports in large networks by filtering the report for specific user groups or computers, in addition to the global lists. The information presentation has also been improved for consistency across all products with a more appealing look and feel.

VBSpam Verified

VB allows now to use the "VB SPAM Verified" certification for all BitDefender's products sharing the same engine. The new BitDefender Security for Exchange version 3.4 will share the same engine with the tested BitDefender Security for Mail Servers version 3.0.2. In the latest tests BitDefender had a total detection rate of 97.96% and a single false positive out of 2400 legitimate emails. In March 2010 BitDefender was awarded its 6th prize in a row.




1.2 BitDefender Security for SharePoint 2007

The following new features or enhancements have been introduced in the BitDefender Security for SharePoint version 3.4.

- Support for Microsoft Office SharePoint 2007 and Windows SharePoint Services (WSS) 3.0
- Proactive Scanning and Detection Methods for the document and file repositories
- Web-based Dashboard for Overview
 - Supports BitDefender's Centralized Management (unlike the 2003 version)
 - Fast and secure collaboration with Microsoft Virus Scanning API integration

Microsoft Office SharePoint 2007 and Windows SharePoint Services (WSS) 3.0

BitDefender Security for SharePoint version 3.4 provides new support for Microsoft[®] Office SharePoint 2007 and  Office SharePoint[®] SharePoint Services 3.0 for fast but secure collaboration. The integration provides fast and seamless security thanks to the integration that uses Microsoft[®] Virus Scanning API (VSAPI).

Proactive Scanning and Detection Methods



On Access, real-time scanning engine to detect viruses in real-time when a user adds or retrieves a document to a document library or list.

On-Demand scanning features allow for scheduled system scans to be performed outside of peak work hours without impacting the overall performance or availability of the system.

Web-based Dashboard and Integration with BitDefender's Centralized Management

The web-based dashboard provides local management and controls for the BitDefender Security for SharePoint. Also BitDefender's Centralized Management is supported (unlike the 2003 version) that allows all endpoint security and servers solutions to be managed from one single management console.



1.3 BitDefender Client Security 3.1.9

The following new features or enhancements have been introduced in the BitDefender Client Security version 3.1.9.

- The New Automated Removable Device Scanning Feature
- Improved Installation and Upgrade Process
- Option to Scan the System Before Installation
- Active Application Module Management for Endpoints
- Restricted Removal of Local Business Client Installations
- Improved On-demand Scanning
- New Supported Operating Systems

The New Automated Removable Device Scanning Feature



The removable device scanning feature is activated to scan devices whenever a removable media is inserted, for example USB sticks, memory cards, CD-ROMs and mapped drives. The scanning rules can be configured for specific removable device types and the automated scanning can be configured with visible scanning progress notification or invisible unless infections are detected. This feature helps to automate and enforce security policy instead of relying on written policies and manual scans.

Improved Installation and Upgrade Process

The installation process for BitDefender Solutions has been improved to include an option to select specific modules for the Client Security solution. 32 and 64-bit platforms are automatically recognized by the single installation package. Unattended installation packages can be pre-configured and old Client Security versions are automatically detected and upgraded.

Separate steps are no longer required to install the Business Client and Agent. In addition, all BitDefender Windows Server Add-ons are included in the Management Server installation. Any further product updates are listed on the dashboard for easy installation and a system restart will be prompted only if necessary.



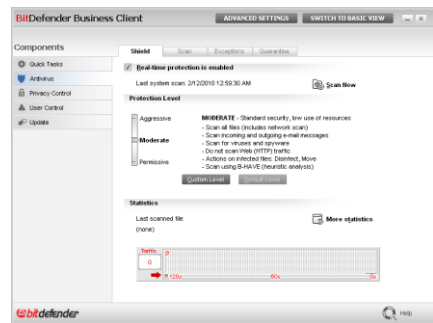
New Option to Scan the System Before Installation



A new option in Client Security solution scans the system before installing the Business Client to ensure the system is clean before starting the installation. Memory resident viruses can otherwise compromise the installation by infecting the files belonging to the Client Security solution installation, preventing the completion of the installation process.

Active Application Module Management for Endpoints

The Client Security solution can be configured prior to installation for greater choice and flexibility via the Centralized Management console. The new feature allows basic antivirus or the ability to activate other modules (e.g. User Control, Privacy Control and Antispam) based on the organization's specific needs. This feature simplifies the user interface by removing unused modules and consumes less endpoint's resources by only running the required modules.



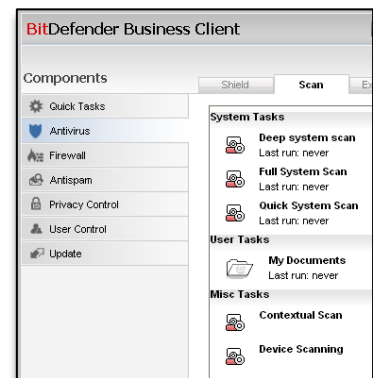
Restricted Removal of Local Business Client Installations



New uninstall password options have been included to prevent unauthorized removals of local Business Client installations. Prompting the BitDefender Administrator's password provides an extremely powerful feature especially for organizations that allow users to run with local administrator rights on their computers (i.e. allowing install/uninstall applications). With this feature the IT administrators can ensure the endpoints are not left unprotected and application/user controls are not circumvented by knowledgeable users.

Improved On-demand Scanning

The on-demand scanning methods are now enhanced with more granular settings. The currently available scanning methods are called Deep System Scan (scans everything), Full System Scan (scan everything except archives or boot sectors), Quick System Scan (scans operating system files, i.e. Windows and Program Files directories), and My Documents (scans only the current user's folders).



1.4 BitDefender Management Server 3.1.9

The following new features or enhancements have been introduced in the BitDefender Management Server version 3.1.9 that is shipped with the BitDefender Client Security solution version 3.1.9 to provide Centralized Management features for both Endpoints and Servers.

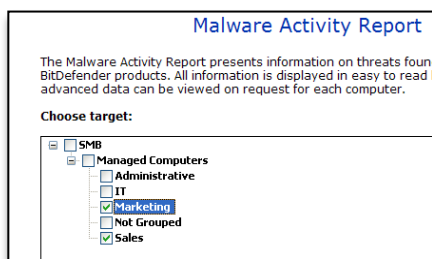
- Endpoint Audit and Management - Improved WMI Script Management
- Improved Reports with Group Filters
- Improved BitDefender Administrator's Password

Improved WMI Script Management

The new WMI Script Type categories are now helping to find quickly the right scripts. WMI Scripts have also a new option for "Run Program" with system credentials instead user credentials to ensure the scripts will be executed without restrictions imposed to the local users or needing the local users to be logged in.

| WMI Script Name | WMI Script Description | WMI Script Type |
|---------------------------------------|---------------------------------------|---------------------|
| Computer restart | Computer restart | Desktop Manage |
| Computer shutdown | Computer shutdown | Desktop Manage |
| Current Processes | List Current Processes | Processes |
| Current Shares | List Current Shares | Files and Folders |
| Enable/Disable Autorun for all Drives | Enable/Disable Autorun for all Drives | Disk and File Syste |
| Enable/Disable USB Mass Storage | Enable/Disable USB Mass Storage | Disk and File Syste |
| Enumerate memory | Enumerate memory | Computer Hardwar |

Improved Reports with Group Filters



Organizations requiring reports for large managed networks will benefit from simplified reporting that allows filtering the reports for specific user groups or computers - in addition to the global reports. Information is now presented has an improved look & feel, are easier to read, and provide consistency across various report formats.

Improved BitDefender Administrator's Password

The administrator's password management has been simplified and now one password works for all administrative tasks (uninstall, user control and switching to power user) and is managed via the Centralized Management console. Changing the administrator password is now much easier and straightforward without the need to remember multiple user accounts or passwords.



The BitDefender Administrator's password can be also used for the Business Client's feature to switch the restricted user's interface into power user mode, for example when advanced settings or scanning options are needed on computers where the Client Security solution has identified infections.

1.5 BitDefender Security for Windows Servers 3.4

The following new features or enhancements have been introduced in the BitDefender Security Solution versions 3.4 for Windows Servers.

- Common New Features in Windows Server Solutions 3.4
- New Features in BitDefender Security for File Servers 3.4
- New Features in BitDefender Security for Mail Servers and Exchange 3.4



Common New Features in Windows Server Solutions 3.4

1. Improved integration with the Centralized Management allows more complete remote controls over the BitDefender's Windows Server security features and policies.
2. Installation procedure has been improved with support for custom installation path (beside C drive), configurable product updates automation with roll-back option.

New Features in BitDefender Security for File Servers 3.4

1. The latest release for BitDefender Security for File Servers has now about 70% smaller memory footprint compared to the previous version, turning into minimal system degradation and maximum operational performance.
2. The new optimized scanning improves the scanning speed and reduces system load by maintaining a database of already scanned files known to be safe. The database is continuously updated to identify whenever new files are added or existing ones updated.
3. New alerting features include dashboard and email notification features in the Centralized Management whenever malware has been detected.



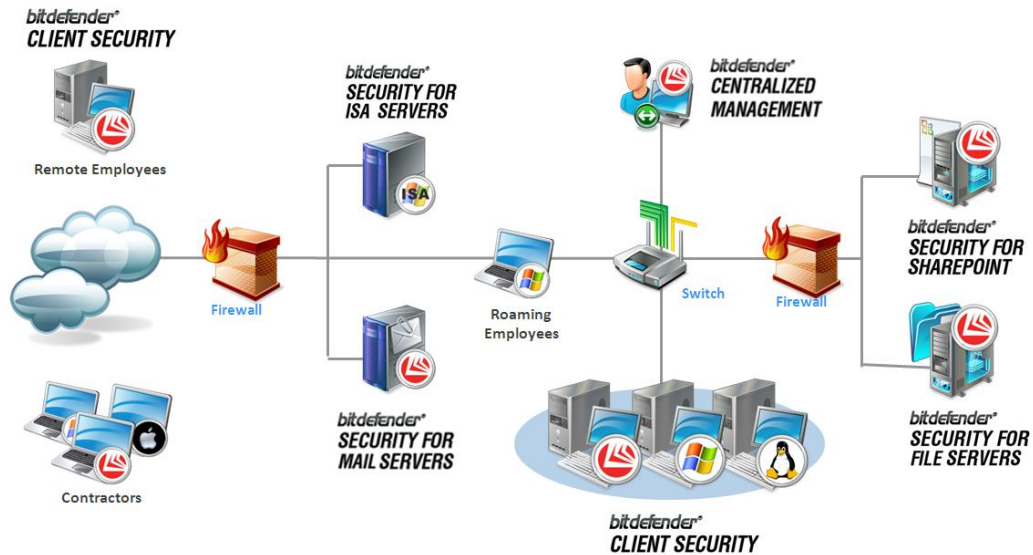
New Features in BitDefender Security for Mail Servers and Exchange 3.4

1. Improved quarantine controls allow now administrators to easily locate and release legitimate emails after content and attachment filtering or antispam rules result quarantining the email.



2. Conclusion

The new Q2/2010 release for BitDefender's Business Solutions protects two new Microsoft® Server Solutions: Microsoft Exchange Server 2010 and Microsoft Office SharePoint Server 2007. Many new features were introduced within the new Client Security Solution 3.1.9 and the Centralized Management supports now more server solutions and provides improved usability and features. The BitDefender's Windows Server Solution versions 3.4 have been all enhanced for improved performance and easier deployment from a single installation package.



DEFENSE IN DEPTH

BitDefender Business Solutions is a comprehensive suite of solutions providing end-to-end network protection from the gateway to the desktop. BitDefender's proactive, multi-platform products detect and stop viruses, spyware, adware and Trojan threats that can compromise your network integrity.